

Do You Know Where Your Garbage Is? (12:39) Name \_\_\_\_\_ KEY \_\_\_\_\_  
Cornell University Waste Management Institute

1. What are the 3 R's?

*Reduce. Reuse. Recycle.*

2. By what percentage can recycling reduce garbage?

*50% (We can cut it by half.)*

3. What is organic waste and what is the best way to deal with it?

*It comes from plants. We can compost it.*

4. How many pounds of garbage does the average American produce every day?

*Over 4 pounds.*

5. What is the fancy word for burning trash?

*Incineration*

6. What are some of the problems with handling garbage this way?

*It produces air pollution and the ash can be toxic.*

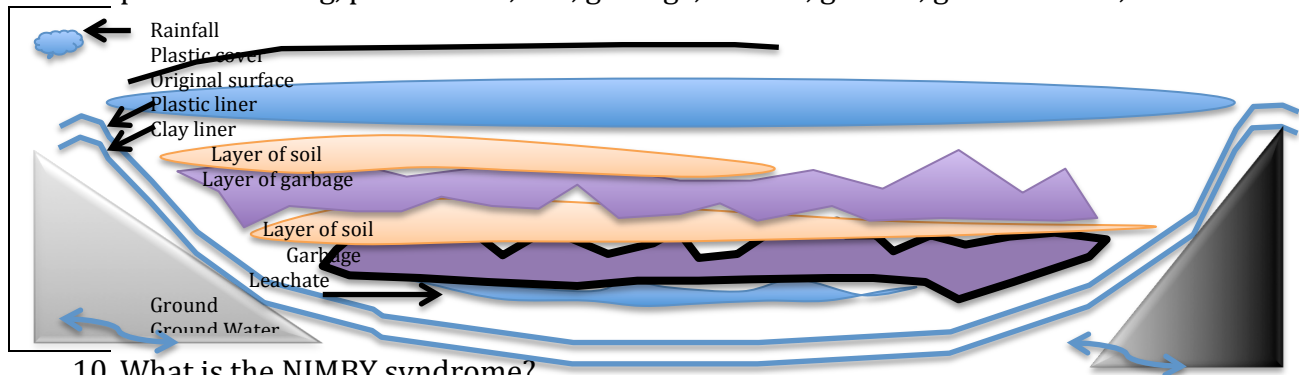
7. What does a Waste to Energy Facility do that is different from a regular incinerator?

*It captures the heat from burning garbage and uses it to produce steam or heat to make electricity.*

8. What is the most common way of dealing with unwanted trash in the US?

*Take it to the landfill.*

9. Draw a diagram of the layers in a modern landfill below. Label: leachate, clay, plastic covering, plastic liner, soil, garbage, rainfall, ground, ground water, surface.



10. What is the NIMBY syndrome?

*Not In My BackYard, which means don't put landfills (or other unpopular things) in my neighborhood.*

11. All ways of managing waste, including recycling and composting makes some pollution.